

MODEL 7900

Application

- Exterior or interior doors
- Door weight up to 200 lbs.
- Minimum door width 27"
- Can be used with butt hinges (5" max), 3/4 offset pivots or center hung pivots

Features

- Single acting
- Steel track & slider
- Dress cover plate included
- Shock absorbing door stop
- Aluminium alloy shell
- Adjustable sweep and latch speeds
- Adjustable backcheck cushioning and positioning
- Spring power options:
 - Size 4 (50% adjustability)
 - Adjustable spring 1-3
- Handed
- 1-3/4" – 2-1/4" thick doors
- Fully adjustable, multi-point hold open (7900)
- Minimum 4" high frame
- Non-hold open and hold open units have a shock-absorbing adjustable position stop in the slide track. Auxiliary door stop recommended
- Maximum degree of hold open is dependent on how door is hung:
 - Butt hinges: 85-110°
 - Offset pivots: 85-95°
 - Center pivots: 85-100°
- Torx® screws furnished standard (7970 only)
- Door Position Switch (DPS) option (7970 only)
- 10-year limited warranty

Optional Features

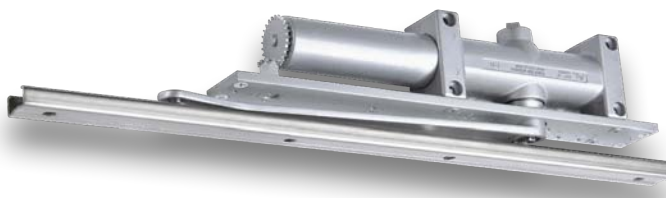
- Delayed Action
- Enhanced backcheck (in lieu of standard backcheck and backcheck positioning)

Compliance

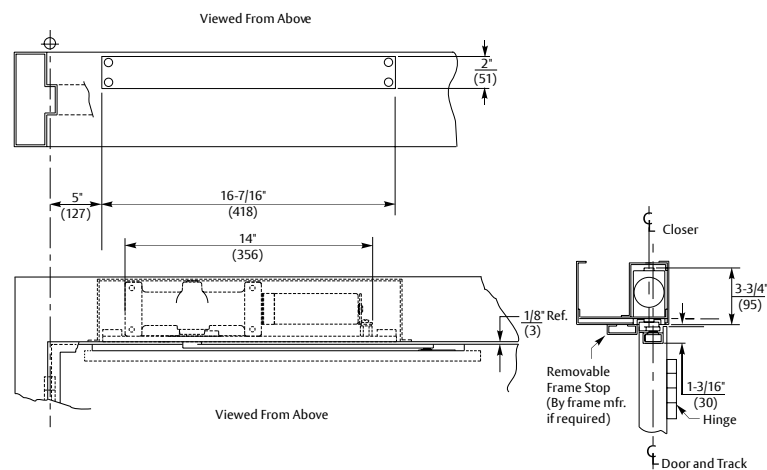
- ANSI A156.4, Grade 1
- UL/cUL listed for use on fire rated doors
- UL10C listed for positive pressure fire test
- Complies with requirements for the Americans with Disabilities Act (A.D.A.) and ANSI standard A117.1 (Model 7900 or 7970)
- Listed with New York City Materials and Equipment Acceptance Division (41-60-SM)

WHI

The Fire Block door liner is listed with Warnock Hersey International for use in 20-minute (wood) fire doors that are listed with WHI, when used with the Series 7900 door closer. Specify model number 790. The combination of a 7900 door closer installed in a UL labeled hollow metal door frame and a Norton Rixson Fire Block installed in a WHI labeled 20-minute (wood) fire door, which has the tested preparation, may qualify as a 20-minute fire door assembly. Always consult local authorities to determine the acceptance and proper application of fire door and hardware applications.



TECHNICAL INFO



ARCHITECTURAL GRADE

OVERHEAD CONCEALED CLOSERS

ASSA ABLOY

MODEL 7900

HOW TO ORDER

790 Model	4 Closer power size	H Suffixes	RH Handing	x 689 Finish
790 - Standard	0 – Multi-size 1-3 spring 4 – Size 4 spring	H – Hold open DA – Adjustable delayed action closing EBC – Enhanced backcheck	LH – Left Hand RH – Right Hand	Powder Coat Finishes: 689 Sprayed Aluminum 690 Sprayed Dark Bronze 691 Sprayed Light Bronze 693 Sprayed Black 694 Sprayed Medium Amber 696 Sprayed Brass 613E Dark Oxidized Satin Bronze - equivalent BSP Black Suede Powder WSP White Suede Powder Plated Finishes: 605 Bright Brass 606 Satin Brass 625 Bright Chrome 626 Satin Chrome

Note: For 20-min wood fire doors, order 790 Fire Block package.