

TX3 New -256 Products

A. Introduction

This document describes the differences between current TX3 products and the new products ending in **-256**. For any information not covered in this document, see the appropriate TX3 manual.

B. New Models

Table 1 New Models

Old Model	New Model	Name in TX3 Configurator version 2.13.11	New Controller Board	Changes to Connectors
TX3-120U-C	TX3-120U-C-256	TX3-120/200-4 (4x20 LCD)	MD-1398	P7 TX3-GPM connector is no longer used* P5 TX3-IP connector has been removed
TX3-2000-4U-C	TX3-2000-4U-C-256	TX3-2000-4 (4x20) LCD		
TX3-2000-8U-C	TX3-2000-8U-C-256	TX3-2000-8 (8x20 LCD)		
TX3-2000-8C-C	TX3-2000-8C-C-256			
TX3-NSL-12K-C	TX3-NSL-12K-C-256	NA	MD-1399	No change to connectors
TX3-NSL-8M	TX3-NSL-8M-256	NA		
TX3-ER-8-B	TX3-ER-8-B-256	ERU 2.0	MD-1400	P3 TX3-IP connector has been removed
TX3-CX-2K-A	TX3-CX-2K-A-256	TX3-CX-2 (2 Doors 2 Readers)	MD-1397	P4 TX3-IP connector has been removed
TX3-CX-4K-A	TX3-CX-4K-A-256	2 x TX3-CX-2 (2 Doors 2 Readers)		
TX3-CX-2-A	TX3-CX-2-A-256	TX3-CX-2 (2 Doors 2 Readers)		
TX3-CX-4-A	TX3-CX-4-A-256	2 x TX3-CX-2 (2 Doors 2 Readers)		
NA	TX3-IP-256	TX3-IP-Gateway (RS485 to IP)	MD-1396	NA
NA	TX3-IP-NP-256	TX3-IP-Gateway (RS485 to IP)	MD-1396	NA

*** Note:** Touch Screens containing the MD-1398 lobby board do not support the TX3-GPM guard phone module (see section E on page 4).

C. Ethernet Networking

Models ending in **-256** do not support the TX3-IP module.

As a result of this change, the method for connecting TX3 devices on an Ethernet network has changed.

Figure 1 shows the old method for networking TX3 devices in an Ethernet network. Each device has an internal TX3-IP module that connects to the Ethernet network.

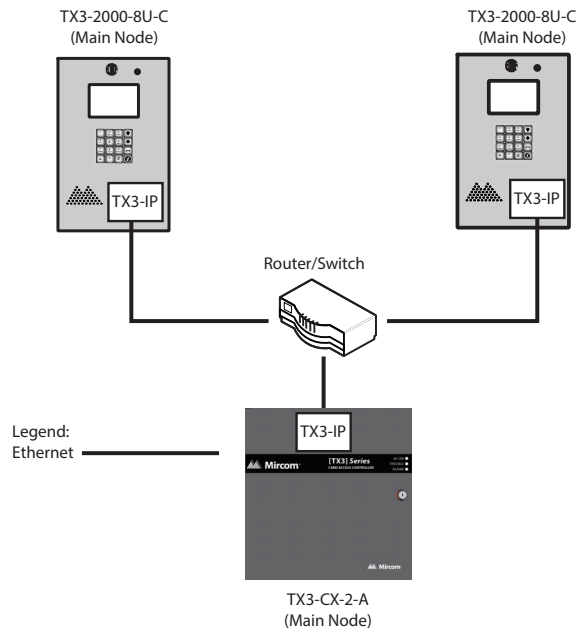


Figure 1. TX3 devices on an Ethernet network - old configuration

Figure 2 shows the new method. The TX3-IP module is no longer used. Each device that is connected to Ethernet must have a TX3-IP-256 or TX3-IP-NP-256 IP adapter module connected to it by RS-485. The IP adapter module is a bridge between RS-485 on the device side, and Ethernet on the network side.

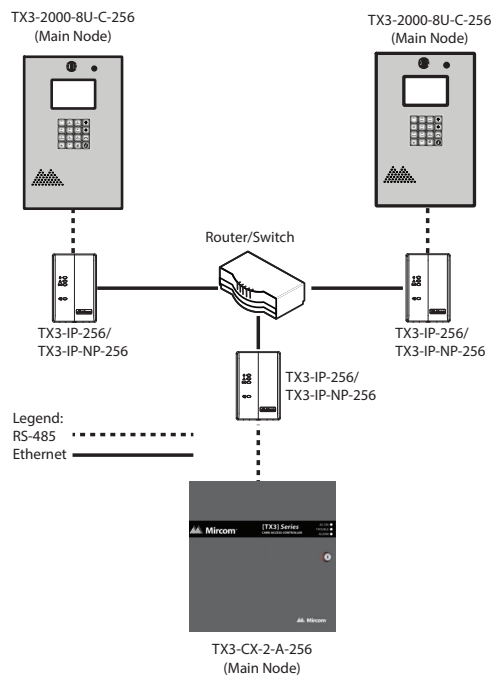


Figure 2. TX3 devices on an Ethernet network - new configuration

Figure 3 shows the old method for networking TX3 devices in a mixed RS-485 and Ethernet network. Each device connected to Ethernet has an internal TX3-IP module installed.

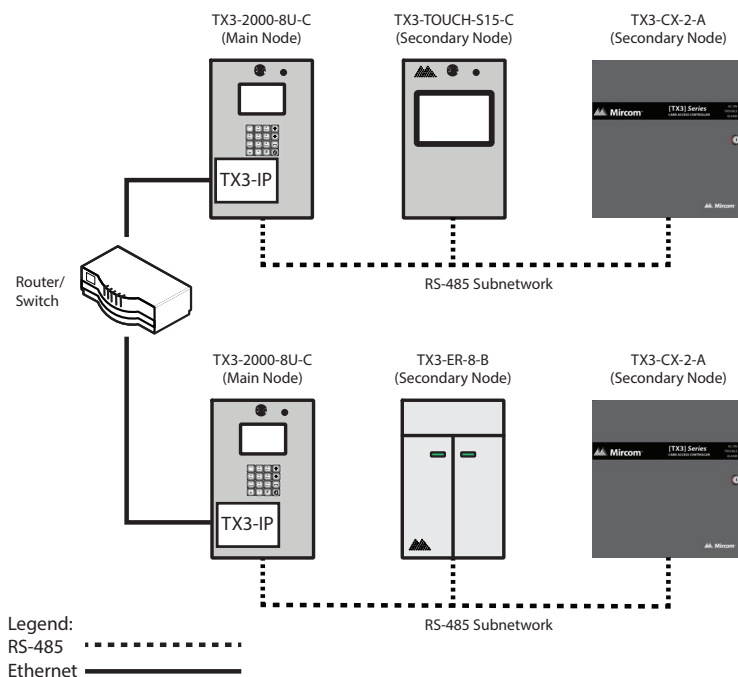


Figure 3. TX3 devices on a mixed network - old configuration

Figure 4 shows the new method for networking on a mixed network. The TX3-IP module is no longer used. Each device that is connected to Ethernet must have a TX3-IP-256 or TX3-IP-NP-256 IP adapter module connected to it by RS-485. The IP adapter module is a bridge between RS-485 on the device side, and Ethernet on the network side.

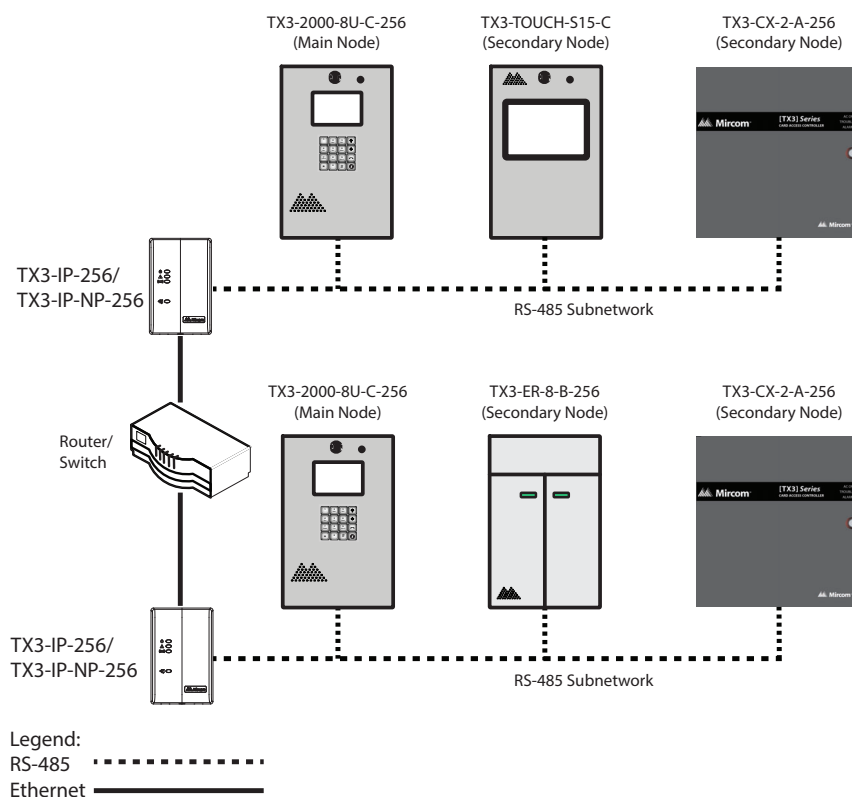


Figure 4. TX3 devices on a mixed network - new configuration

D. TX3-IP-256 and TX3-IP-NP-256

The TX3-IP-256 and TX3-IP-NP-256 serve as IP adapters for models ending in **-256**. They resemble the TX3-CX-1 and TX3-CX-1-NP single door controllers, but they have no door controller functionality. They are powered the same as TX3-CX-1 and TX3-CX-1-NP. Their mechanical installation is the same as TX3-CX-1 and TX3-CX-1-NP.

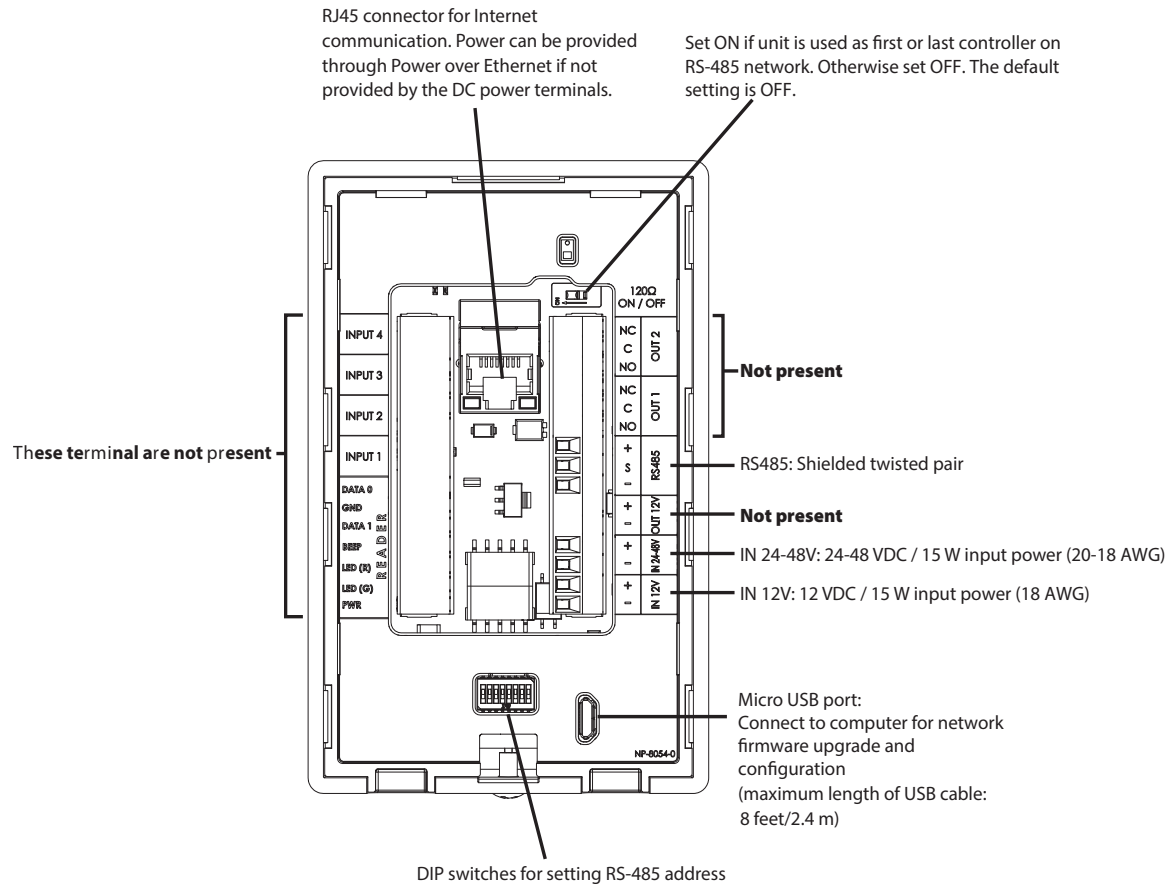


Figure 5. TX3-IP-256 and TX3-IP-NP-256

E. TX3-GPM Guard Phone Module

The MD-1398 lobby controller board no longer supports the TX3-GPM guard phone module. **This affects all models ending in -256 and Touch Screens that contain the new MD-1398 lobby controller board.**

F. Fonts on the Lobby Control Unit Display

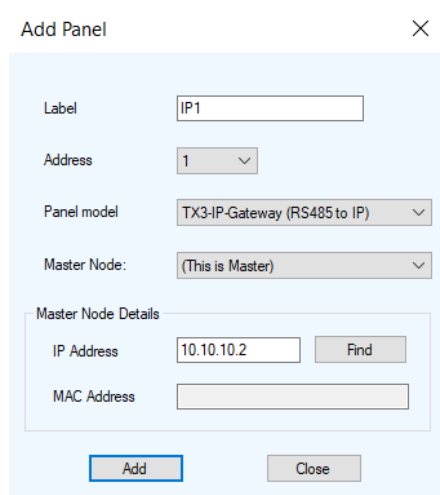
Two of the six fonts available on the lobby control unit displays have been removed: **Lucida console-9 lines** and **Raize-8 lines**. This affects all lobby control units ending in **-256**.

G. Changes in the TX3 Configurator version 2.13.11

When you add a new -256 panel in the Configurator, the name in the **Add Panel** window is the same as the name for the corresponding old model (see Table 1 on page 1).

The exception is TX3-IP-256 and TX3-IP-NP-256, which are named **TX3-IP-Gateway (RS485 to IP)**.

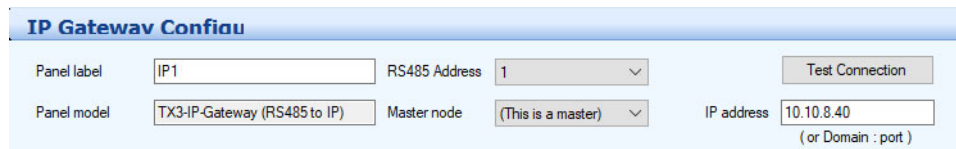
The TX3-IP-256 and TX3-IP-NP-256 serve as Mains (Masters) for the other -256 models.



The 'Add Panel' dialog box contains the following fields:

- Label:** IP1
- Address:** 1
- Panel model:** TX3-IP-Gateway (RS485 to IP)
- Master Node:** (This is Master)
- Master Node Details:**
 - IP Address:** 10.10.10.2
 - MAC Address:** (empty)
- Buttons:** Add, Close

Figure 6. Add TX3-IP-256 or TX3-IP-NP-256 in the TX3 Configurator

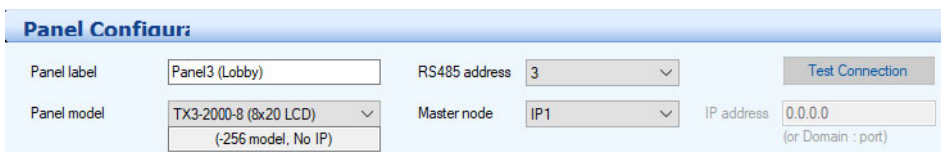


The 'IP Gateway Config' window contains the following fields:

- Panel label:** IP1
- RS485 Address:** 1
- Panel model:** TX3-IP-Gateway (RS485 to IP)
- Master node:** (This is a master)
- IP address:** 10.10.8.40 (or Domain : port)
- Buttons:** Test Connection

Figure 7. TX3-IP-256 or TX3-IP-NP-256 in the TX3 Configurator

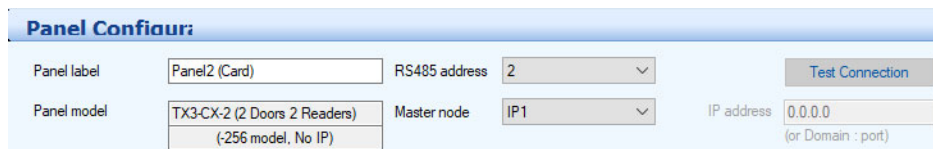
When the Configurator is connected to the TX3 network, an additional field appears below the names of -256 models, as shown in the examples below.



The 'Panel Config' window for TX3-2000-8U-C-256 contains the following fields:

- Panel label:** Panel3 (Lobby)
- RS485 address:** 3
- Panel model:** TX3-2000-8 (8x20 LCD) (-256 model, No IP)
- Master node:** IP1
- IP address:** 0.0.0.0 (or Domain : port)
- Buttons:** Test Connection

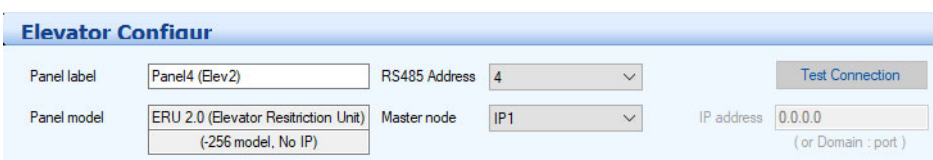
Figure 8. TX3-2000-8U-C-256



The 'Panel Config' window for TX3-CX-2-A-256 contains the following fields:

- Panel label:** Panel2 (Card)
- RS485 address:** 2
- Panel model:** TX3-CX-2 (2 Doors 2 Readers) (-256 model, No IP)
- Master node:** IP1
- IP address:** 0.0.0.0 (or Domain : port)
- Buttons:** Test Connection

Figure 9. TX3-CX-2-A-256



The 'Elevator Config' window for TX3-ER-8-B-256 contains the following fields:

- Panel label:** Panel4 (Elev2)
- RS485 Address:** 4
- Panel model:** ERU 2.0 (Elevator Restriction Unit) (-256 model, No IP)
- Master node:** IP1
- IP address:** 0.0.0.0 (or Domain : port)
- Buttons:** Test Connection

Figure 10. TX3-ER-8-B-256

H. Compatibility

Table 2 shows the firmware versions that are compatible with these three new controller boards:

- **The lobby controller board MD-1398** with firmware SO-466 version 3.8.112
- **The card access controller board MD-1397** with firmware SO-465 version 3.7.112
- **The elevator controller board MD-1400** with firmware SO-468 version 3.7.128

For example, an old TX3 lobby unit with MD-1245 on the same network as a new 256 lobby unit must have firmware version 3.7.x or higher.

Table 2 Firmware Compatibility with MD-1398, MD-1397, MD-1400

TX3 Product	Board Assembly	Firmware Version
TX3 IP Gateway	MD-1396*	SO-469 3.7.5 or higher
TX3 Elevator Controller	MD-1400 (ERU2)*	SO-468 3.7.128 or higher
	MD-1323 (ERU2)	SO-254 3.7.x or higher
	MD-1094 (ERU)	SO-254 3.7.x or higher
	MD-955	SO-224 not compatible
TX3 NSL	MD-1399*	SO-467 3.7.3 or higher
	MD-1322	SO-460 3.7.2 or higher
	MD-1095	SO-255 3.0.x or higher
	MD-923	SO-223 1.0.x, 1.1.x, 2.0.x
TX3 Lobby	MD-1398*	SO-466 3.8.112 or higher
	MD-1086, MD-1245	SO-253 3.7.x or higher
	MD-951	SO-254 not compatible
TX3 Card Access	MD-1397*	SO-465 3.7.112 or higher
	MD-1093, MD-1060	SO-252 3.7.x or higher
	MD-934	SO-228 not compatible

The NSL controller board MD-1399 with firmware SO-467 version 3.7.2 is compatible with the following panel with firmware versions as detailed in Table 3.

Table 3 Firmware Compatibility with MD-1399

TX3 Product	Board Assembly	Firmware Version
TX3 Lobby	MD-1398*	SO-466 3.8.109 or higher
	MD-1086, MD-1245	SO-253 3.5.x or higher
	MD-951	SO-254 not compatible

Table 4 shows the firmware versions that are compatible with **TX3 Configurator version 2.13.11** and **TX3 Touch version 2.13.11**.

Table 4 Firmware Compatibility with TX3 Configurator and TX3 Touch

TX3 Product	Firmware
TX3 Lobby	Firmware V1.3.x, V1.4.x, V1.5.x, V2.0.x, V2.4.x, V3.0.x, V3.4.x, V3.5.x, V3.7.x, 3.8.x, V3.8.112*
TX3-CX double door double reader controller	Firmware V1.1.x, V1.2.x, V1.3.x, V2.0.x, V2.4.x, V3.0.x, V3.1.x, V3.4.x, V3.5.x, V3.6.x, V3.7.x, V3.7.1xx*
TX3-CX-1 and TX3-CX-1NP single door controller	Firmware V3.1.x, V3.4.x, V3.5.x, V3.6.x, V3.7.x
Elevator Restriction unit	Firmware V3.0.x, V3.1.x, V3.4.x, V3.5.x, V3.7.x
Elevator Restriction unit 2.0	Firmware V3.7.x, V3.7.1xx*
Aperio controller	No longer supported
TX3 Touch	Software V1.4.x, V2.0.x, V2.1.x, V2.3.x, V2.4.x, V2.5.x, V2.8.x, V2.9.x, V2.10.x, V2.12.x, V2-13-x, V2-13-x (MD-1398 lobby controller board*)

* Indicates a new -256 product

Note: For normal operations, V2.12.x and 2.13.x of the Touch software are compatible with the -256 version of the lobby board that is installed inside the TX3 Touch unit. The only exception is running the Network Firmware Upgrade feature within the Touch screen. In order to run the Network Firmware Upgrade, upgrade the Touch software to V2.13.11 or later.