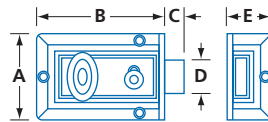
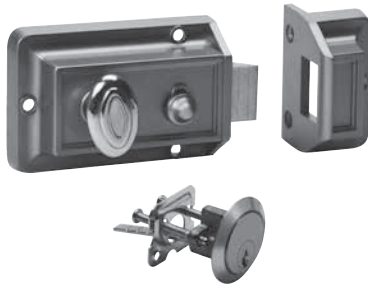


RIM LOCKS

SECURITY HARDWARE

NIGHT LATCH

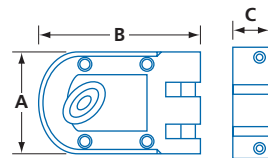
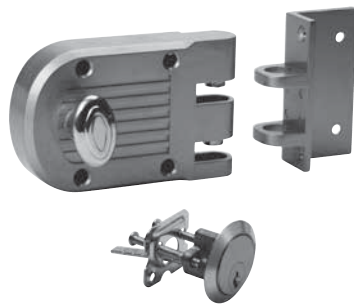


- Zinc alloy case and strike
- Solid brass bolt and deadlatch button
- Solid brass 5-pin Yale #9 keyway rim cylinder and trim ring included
- $\frac{9}{16}$ " (14.4 mm) latch throw
- Cylinder screws for up to $2\frac{1}{4}$ " (57 mm) door thickness
- Supplied with mounting screws
- Finish: painted gold color

| MODEL | A | B | C | D | E | /BOX |
|--------|------------------------|--------------------------|--------------------------|---------------------------|--------------------------|------|
| 0508-1 | $2\frac{1}{2}$ (63) | $3\frac{5}{8}$ (91.9) | $\frac{9}{16}$ (14.4) | $\frac{15}{16}$ (24.1) | $1\frac{1}{4}$ (31.9) | 12 |

IN (MM)

JIMMY PROOF DEADLOCK

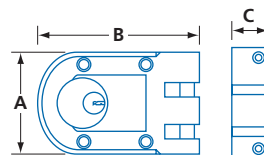
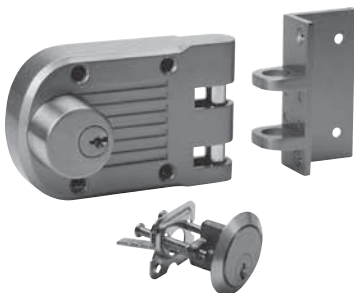


- Zinc alloy case and keeper
- Brass plated reinforced steel vertical bolts
- Solid brass 5-pin Yale #9 keyway rim cylinder and trim ring included
- Available keyed alike (KA) or keyed different (KD)
- Cylinder screws for up to $2\frac{1}{4}$ " (57 mm) door thickness
- Supplied with mounting screws
- Finish: painted gold color

| MODEL | A | B | C | /BOX |
|--------|----------------------------|-----------------------------|-------------|------|
| 0515-1 | $2\frac{25}{32}$ (70.5) | $4\frac{13}{32}$ (112.0) | 1 (25.5) | 12 |

IN (MM)

JIMMY PROOF DEADLOCK – DOUBLE CYLINDER



- Zinc alloy case and keeper
- Brass plated reinforced steel vertical bolts
- 2 solid brass 5-pin Yale #9 keyway rim cylinders and trim rings included
- Cylinder screws for up to $2\frac{1}{4}$ " (57 mm) door thickness
- Supplied with mounting screws
- Finish: painted gold color

| MODEL | A | B | C | /BOX |
|---------|----------------------------|-----------------------------|-------------|------|
| 0515A-1 | $2\frac{25}{32}$ (70.5) | $4\frac{13}{32}$ (112.0) | 1 (25.5) | 12 |

IN (MM)

